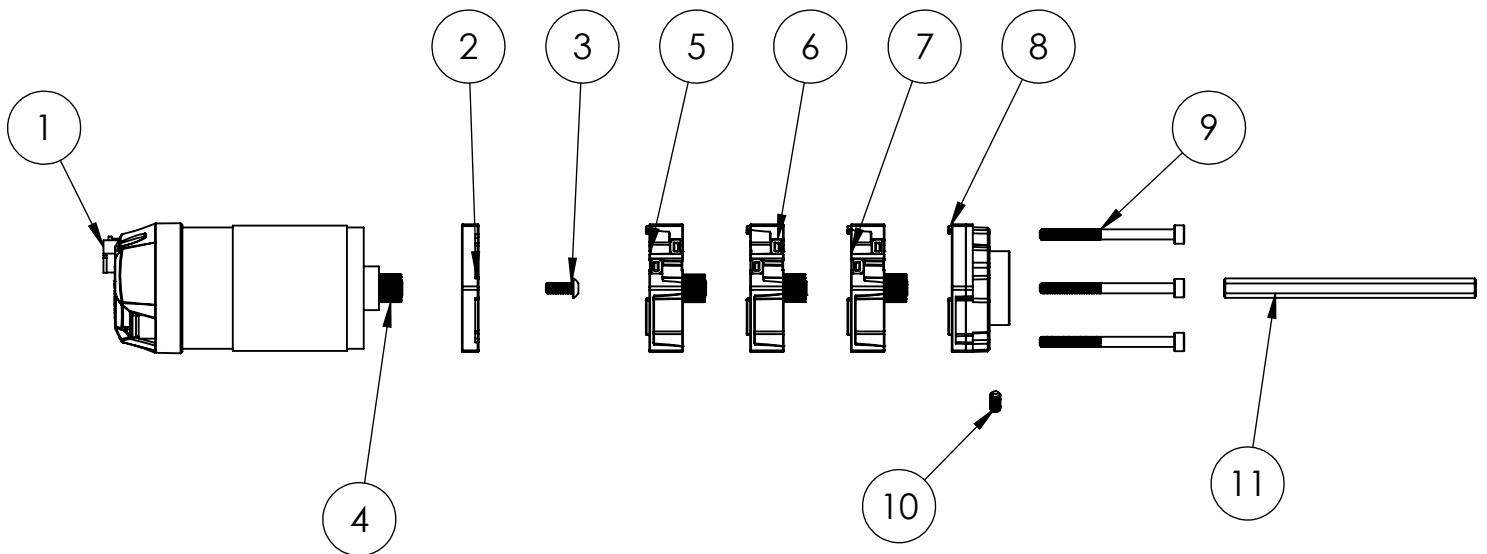


UltraPlanetary System

ITEM NO.	PART NUMBER	DESCRIPTION	Default/ QTY.
1	REV-41-1291	HD Hex Motor	1
2	REV-41-1607	HD Hex Mounting Plate	1
3	REV-41-1609	M3 x 8mm Button Head Screw	2
4	REV-41-1608	UltraPlanetary HD Hex Pinnion Gear	1
5	REV-41-1603	UltraPlanetary 5:1 Cartridge	1
6	REV-41-1602	UltraPlanetary 4:1 Cartridge	1
7	REV-41-1601	UltraPlanetary 3:1 Cartridge	1
8	REV-41-1604	UltraPlanetary Output Cartridge	1
9	REV-41-1609	M3 x 40mm Cap Head Screw	6
10	REV-41-1604	M3 x 6mm Set Screw	1
11	REV-41-1347	5mm X 75mm Hex Shaft	1



MM SHEET TOLERANCES:

X ± 0.50 MM
X.X ± 0.10 MM
X.XX ± 0.05 MM
ANGLES ± 2°

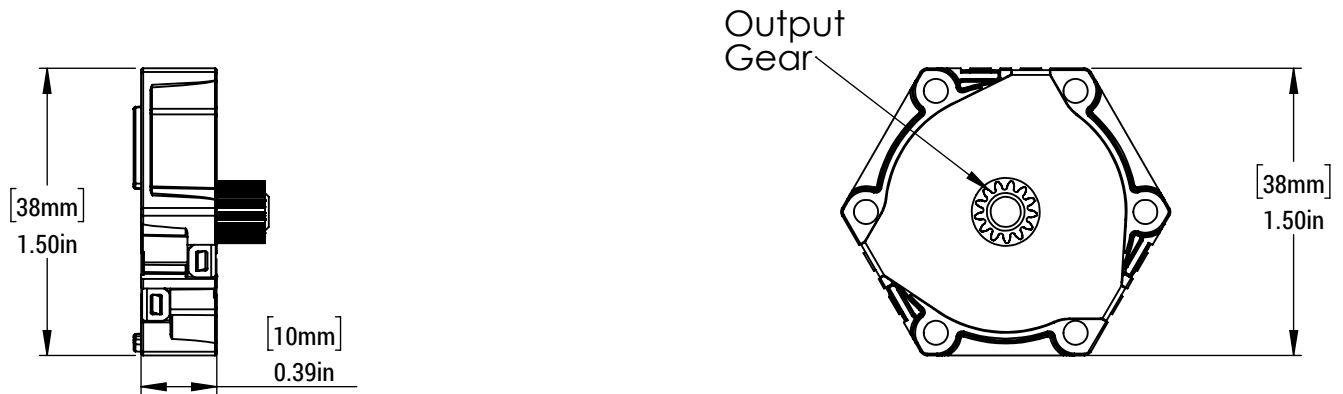
INCH SHEET TOLERANCES:

X ± 0.1 IN
X.X ± 0.02 IN
X.XX ± 0.004 IN
X.XXX ± 0.002 IN
ANGLES ± 2°

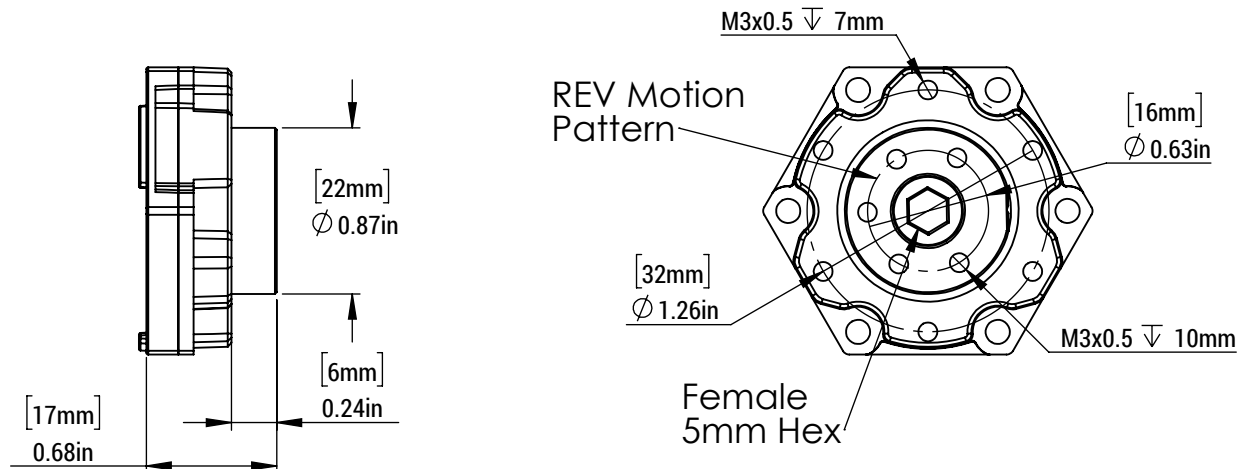
MATERIAL:

DATE: 8/19/2019

UltraPlanetary System



Part Number	Approximate Gear Ratio	Exact Ratio
REV-41-1601	3:1	84/29
REV-41-1602	4:1	76/21
REV-41-1603	5:1	68/13



MM SHEET TOLERANCES:

X ± 0.50 MM
 X.X ± 0.10 MM
 X.XX ± 0.05 MM
 ANGLES ± 2°

INCH SHEET TOLERANCES:

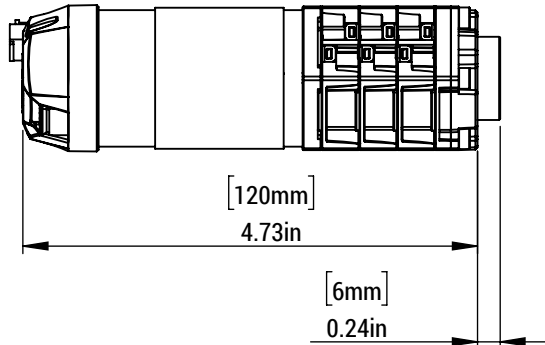
X ± 0.1 IN
 X.X ± 0.02 IN
 X.XX ± 0.004 IN
 X.XXX ± 0.002 IN
 ANGLES ± 2°

MATERIAL:

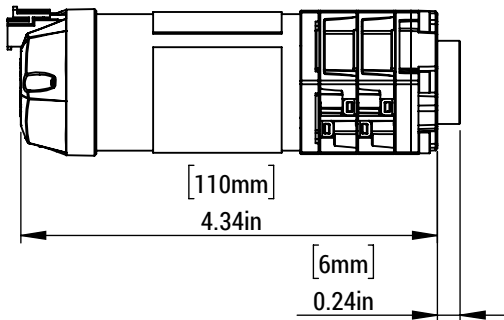
DATE: 8/19/2019

UltraPlanetary System

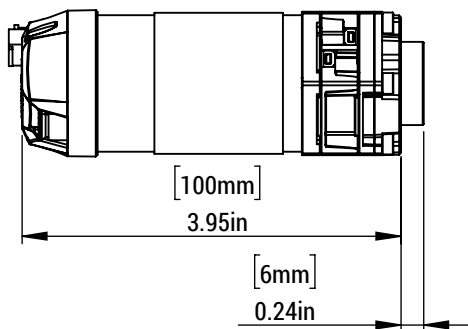
3 Cartridge configuration



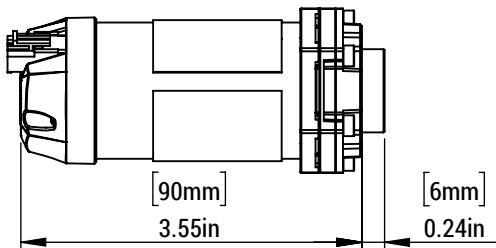
2 Cartridge configuration



1 Cartridge configuration



0 Cartridge configuration



Gear Ratio Table (Input:1)

Stage 1	Stage 2		
	REV-41-1601	REV-41-1602	REV-41-1603
REV-41-1601	8.4	-	-
REV-41-1602	10.5	13.1	-
REV-41-1603	15.2	18.9	27.4
REV-41-1601 & REV-41-1601	24.3	30.4	43.9
REV-41-1601 & REV-41-1602	30.4	37.9	54.8
REV-41-1601 & REV-41-1603	43.9	54.8	79.3
REV-41-1602 & REV-41-1602	37.9	47.4	68.5
REV-41-1602 & REV-41-1603	54.8	68.5	99.0
REV-41-1603 & REV-41-1603	79.3	99.0	143.1

Output Torque (Nm)

Stage 1	Stage 2		
	REV-41-1601	REV-41-1602	REV-41-1603
REV-41-1601	0.9	-	-
REV-41-1602	1.1	1.4	-
REV-41-1603	1.6	2.0	2.9
REV-41-1601 & REV-41-1601	2.6	3.2	4.6
REV-41-1601 & REV-41-1602	3.2	4.0	5.8
REV-41-1601 & REV-41-1603	4.6	5.8	8.3
REV-41-1602 & REV-41-1602	4.0	5.0	7.2
REV-41-1602 & REV-41-1603	5.8	7.2	10.4
REV-41-1603 & REV-41-1603	8.3	10.4	15.0

MM SHEET TOLERANCES:

X ± 0.50 MM
 X.X ± 0.10 MM
 X.XX ± 0.05 MM
 ANGLES ± 2°

INCH SHEET TOLERANCES:

X ± 0.1 IN
 X.X ± 0.02 IN
 X.XX ± 0.004 IN
 X.XXX ± 0.002 IN
 ANGLES ± 2°

MATERIAL:

DATE: 8/19/2019